

# Sample Residential Fire Estimate





## Skyline Adjusters, LLC

One World Trade Center, FL 85  
 New York, NY 10007  
 800-590-7293

### HAWAII-RESIDENTIAL-X

#### PRE-CONSTRUCTION

DESCRIPTION	QTY	UNIT PRICE	TOTAL
1. Building Permit Fee <i>Based on Calculator. Open Item.</i>	1.00 EA @	8,879.33 =	8,879.33
2. Building Permit Plan Review Fee <i>Based on Calculator. Open Item.</i>	1.00 EA @	1,775.87 =	1,775.87
3. Drafting/Engineering <i>Place-Holder. Open Item.</i>	1.00 EA @	6,552.00 =	6,552.00
4. Project Manager - Residential <i>Job Planning; permit procurement, sub-contractor coordination and job staging.</i>	4.00 HR @	143.33 =	573.32
5. Allowance for Additional Taxes, insurance, permits & fees <i>Place-Holder. Open Item.</i>	1.00 EA @	2,730.00 =	2,730.00

#### SITE WORK

DESCRIPTION	QTY	UNIT PRICE	TOTAL
6. Clear Lot & Remove Existing Slab and Utilities	1.00 EA @	38,600.00 =	38,600.00
7. Allowance for Foundation Excavation	1.00 EA @	23,057.41 =	23,057.41
8. Backhoe loader and operator	8.00 HR @	219.70 =	1,757.60
9. Dump truck and operator - 10 ton	4.00 HR @	202.25 =	809.00
10. General Laborer - per hour	24.00 HR @	94.06 =	2,257.44

#### Foundation

DESCRIPTION	QTY	UNIT PRICE	TOTAL
11. Lumber for Forms	196.17 LF @		INCLUDED
12. Material Only Concrete Form Stakes (10 Pack)	6.00 EA @	58.60 =	351.60
13. Gravel under slab - in place	64.65 CY @	103.00 =	6,658.95
14. Polyethylene vapor barrier	1,745.53 SF @	0.65 =	1,134.59
15. Footings - labor & materials - Reinforced	11.00 CY @	956.85 =	10,525.35
16. Concrete slab reinforcement - #4 (1/2") - grid, 24" ea way	1,745.53 SF @	3.06 =	5,341.32
17. Concrete slab on grade - 4" - finished in place	1,745.53 SF @	9.95 =	17,368.02
18. Concrete pump truck (per hour)	8.00 HR @	493.53 =	3,948.24
19. Concrete Finisher - per hour	32.00 HR @	215.47 =	6,895.04
20. Concrete sealer - brush or spray applied	1,745.53 SF @	1.70 =	2,967.40
21. Framing hold down - 16"	20.00 EA @	193.25 =	3,865.00



## Skyline Adjusters, LLC

One World Trade Center, FL 85  
 New York, NY 10007  
 800-590-7293

### Footprint

Footprint				Height: 8'
DESCRIPTION	QTY	UNIT PRICE	TOTAL	
<b>EXTERIOR &amp; CEILING FRAMING</b>				
22. Stud wall 2x4x8 ext. w/shear panels	196.17 LF @	55.40 =	10,867.82	
23. Labor to frame 2" x 4" load bearing wall - 16" oc	1,569.33 SF @	2.51 =	3,939.02	
24. Wall Sheathing - OSB - 1/2"	1,569.33 SF @	2.88 =	4,519.67	
25. Joist - ceiling - 2x6 - w/blocking - 16" oc	1,745.53 SF @	4.11 =	7,174.13	
26. Labor to install joist - floor or ceiling - 2x6	2,938.00 LF @	2.21 =	6,492.98	
<b>ELE</b>				
27. Meter base and main disconnect - 200 amp	1.00 EA @	855.37 =	855.37	
28. Meter mast for overhead power - 2 1/2" conduit	1.00 EA @	1,332.78 =	1,332.78	
29. Meter mast weatherhead for overhead power - 2"	1.00 EA @		INCLUDED	
30. Trunk cable - aluminum - 4 wire 4/0	25.00 LF @	27.77 =	694.25	
31. Grounding rod - copper clad with clamp, 8'	2.00 EA @	201.97 =	403.94	
32. Breaker panel - 200 amp w/arc fault breakers	1.00 EA @	4,017.87 =	4,017.87	
33. Circuit breaker - main disconnect - 125 amp	1.00 EA @	350.10 =	350.10	
34. Additional Circuit Breakers	1.00 UN @		INCLUDED	
35. Wire - avg. residence - boxes & wiring	1,745.53 SF @	8.50 =	14,837.01	
<b>PLM</b>				
36. Rough-in plumbing - per fixture	11.00 EA @	3,200.00 =	35,200.00	
<i>Garage: 3; Kitchen: 1; Hall Bath: 3; Master Bath: 4</i>				
37. Dishwasher connection	1.00 EA @	1,000.00 =	1,000.00	
<b>INS</b>				
38. Batt insulation - 10" - R30 - paper / foil faced	1,745.53 SF @	3.65 =	6,371.18	
39. Batt insulation - 4" - R13 - paper / foil faced (Exterior Walls)	1,569.33 SF @	1.99 =	3,122.97	
<b>HVAC</b>				
40. HVAC System	1.00 EA @	8,500.00 =	8,500.00	
41. Ductwork system - hot or cold air	1.00 EA @	10,018.46 =	10,018.46	
42. Test & Balance - HVAC system	1,745.53 SF @	0.58 =	1,012.41	

### Main Level

Living			Height: 8'
Missing Wall	11' 6" X 8'	Opens into DINING	
Door	3' X 6' 8"	Opens into Exterior	
Window	6' X 4'	Opens into Exterior	
Window	6' X 4'	Opens into Exterior	

DESCRIPTION	QTY	UNIT PRICE	TOTAL
-------------	-----	------------	-------

### INTERIOR FRAMING



## Skyline Adjusters, LLC

One World Trade Center, FL 85  
 New York, NY 10007  
 800-590-7293

### CONTINUED - Living

DESCRIPTION	QTY	UNIT PRICE	TOTAL
43. Stud wall - 2" x 4" x 8' - 16" oc	20.75 LF @	38.95 =	808.21
44. Door & Window Headers	1.00 EA @		INCLUDED
45. Joist - ceiling - 2x6 - w/blocking - 16" oc	175.61 SF @		SEE FOOTPRINT
<b>FLOORING</b>			
46. Clean concrete the floor	175.61 SF @	0.57 =	100.10
47. Tile floor covering	175.61 SF @	26.15 =	4,592.20
48. Add-on for diagonal tile installation	175.61 SF @	3.33 =	584.78
49. Grout sealer	175.61 SF @	2.97 =	521.56
<b>WALLS &amp; CEILING</b>			
50. Batt insulation - 4" - R13 - paper / foil faced	264.00 SF @		SEE FOOTPRINT
51. 5/8" drywall - hung, taped, floated, ready for paint (Walls)	264.00 SF @	5.49 =	1,449.36
52. Seal the walls w/PVA primer - one coat	264.00 SF @	1.64 =	432.96
53. Paint the walls - two coats	264.00 SF @	2.57 =	678.48
54. Baseboard - 3 1/4"	38.50 LF @	5.98 =	230.23
55. Seal (1 coat) & paint (2 coats) baseboard	38.50 LF @	6.00 =	231.00
56. Batt insulation - 10" - R30 - paper / foil faced	175.61 SF @		SEE FOOTPRINT
57. 5/8" drywall - hung, taped, floated, ready for paint (Ceiling)	175.61 SF @	5.49 =	964.10
58. Seal the ceiling w/PVA primer - one coat	175.61 SF @	1.64 =	288.00
59. Paint the ceiling - two coats	175.61 SF @	2.57 =	451.32
<b>DOORS &amp; WINDOWS</b>			
60. Exterior door - metal - insulated - flush or panel style	1.00 EA @	787.84 =	787.84
61. Door lockset & deadbolt - exterior	1.00 EA @	137.77 =	137.77
62. Door Hinges	1.00 EA @		INCLUDED
63. Door opening (jamb & casing) - 32"to36"wide - paint grade	1.00 EA @		INCLUDED
64. Brick Molding	1.00 EA @		INCLUDED
65. Seal & paint door opening (per side)	1.00 EA @	85.46 =	85.46
66. Prime & paint door slab only - exterior (per side)	2.00 EA @	116.10 =	232.20
67. Door threshold, aluminum	3.00 LF @	31.71 =	95.13
68. Vinyl window, horizontal sliding, 24-32 sf	2.00 EA @	1,439.48 =	2,878.96
69. Window stool & apron	12.00 LF @	12.95 =	155.40
70. Window trim set (casing & stop)	40.00 LF @	9.39 =	375.60
71. Seal & paint window opening (per side)	2.00 EA @	85.46 =	170.92
72. Window blind - PVC - 2" - 14.1 to 20 SF	2.00 EA @	198.62 =	397.24
<b>MEPs</b>			
73. Heat/AC register - Mechanically attached	1.00 EA @	38.71 =	38.71
74. Outlet	4.00 EA @	28.99 =	115.96
75. Outlet cover	4.00 EA @	5.72 =	22.88



**Skyline Adjusters, LLC**

One World Trade Center, FL 85  
 New York, NY 10007  
 800-590-7293

**CONTINUED - Living**

DESCRIPTION	QTY	UNIT PRICE	TOTAL
76. Switch	1.00 EA @	30.22 =	30.22
77. Switch cover	1.00 EA @	5.72 =	5.72
78. Recessed light fixture	6.00 EA @	221.80 =	1,330.80
79. Light bulb	6.00 EA @	24.68 =	148.08

DESCRIPTION	QTY	UNIT PRICE	TOTAL
<b>Dining</b>			<b>Height: 8'</b>
Missing Wall	11' 6" X 8'	Opens into LIVING	
Door	2' 8" X 6' 8"	Opens into GARAGE	
Missing Wall	9 7/8" X 8'	Opens into KITCHEN	
Missing Wall	11' 6" X 8'	Opens into KITCHEN	
Window	6' X 4'	Opens into Exterior	

DESCRIPTION	QTY	UNIT PRICE	TOTAL
<b>INTERIOR FRAMING</b>			
80. Stud wall - 2" x 4" x 8' - 16" oc	15.50 LF @	38.95 =	603.73
81. Door & Window Headers	1.00 EA @		INCLUDED
82. Joist - ceiling - 2x6 - w/blocking - 16" oc	156.67 SF @		SEE FOOTPRINT
<b>FLOORING</b>			
83. Clean concrete the floor	156.67 SF @	0.57 =	89.30
84. Tile floor covering	156.67 SF @	26.15 =	4,096.92
85. Add-on for diagonal tile installation	156.67 SF @	3.33 =	521.71
86. Grout sealer	156.67 SF @	2.97 =	465.31
<b>WALLS &amp; CEILING</b>			
87. Batt insulation - 4" - R13 - paper / foil faced	206.22 SF @		SEE FOOTPRINT
88. 5/8" drywall - hung, taped, floated, ready for paint (Walls)	206.22 SF @	5.49 =	1,132.15
89. Seal the walls w/PVA primer - one coat	206.22 SF @	1.64 =	338.20
90. Paint the walls - two coats	206.22 SF @	2.57 =	529.99
91. Baseboard - 3 1/4"	28.33 LF @	5.98 =	169.41
92. Seal (1 coat) & paint (2 coats) baseboard	28.33 LF @	6.00 =	169.98
93. Batt insulation - 10" - R30 - paper / foil faced	156.67 SF @		SEE FOOTPRINT
94. 5/8" drywall - hung, taped, floated, ready for paint (Ceiling)	156.67 SF @	5.49 =	860.12
95. Seal the ceiling w/PVA primer - one coat	156.67 SF @	1.64 =	256.94
96. Paint the ceiling - two coats	156.67 SF @	2.57 =	402.64

**DOORS & WINDOWS**



## Skyline Adjusters, LLC

One World Trade Center, FL 85  
 New York, NY 10007  
 800-590-7293

### CONTINUED - Dining

DESCRIPTION	QTY	UNIT PRICE	TOTAL
97. Vinyl window, horizontal sliding, 24-32 sf	1.00 EA @	1,439.48 =	1,439.48
98. Window stool & apron	6.00 LF @	12.95 =	77.70
99. Window trim set (casing & stop)	20.00 LF @	9.39 =	187.80
100. Seal & paint window opening (per side)	1.00 EA @	85.46 =	85.46
101. Window blind - PVC - 2" - 14.1 to 20 SF	1.00 EA @	198.62 =	198.62
<b>MEPs</b>			
102. Heat/AC register - Mechanically attached	1.00 EA @	38.71 =	38.71
103. Outlet	2.00 EA @	28.99 =	57.98
104. Outlet cover	2.00 EA @	5.72 =	11.44
105. Switch	1.00 EA @	30.22 =	30.22
106. Switch cover	1.00 EA @	5.72 =	5.72
107. Chandelier	1.00 EA @	878.24 =	878.24
108. Light bulb	1.00 EA @	24.68 =	24.68

<b>Kitchen</b>			<b>Height: 8'</b>
Missing Wall	11' 6" X 8'	Opens into DINING	
Missing Wall	9 7/8" X 8'	Opens into DINING	
Missing Wall	3' 1" X 8'	Opens into HALL	
Window	5' X 4'	Opens into Exterior	
Door	2' 8" X 6' 8"	Opens into Exterior	
<b>Subroom: Pantry (1)</b>			<b>Height: 8'</b>
Door	6' X 6' 8"	Opens into KITCHEN	

DESCRIPTION	QTY	UNIT PRICE	TOTAL
<b>INTERIOR FRAMING</b>			
109. Stud wall - 2" x 4" x 8' - 16" oc	34.58 LF @	38.95 =	1,346.89
110. Door & Window Headers	1.00 EA @		INCLUDED
111. Joist - ceiling - 2x6 - w/blocking - 16" oc	171.87 SF @		SEE FOOTPRINT
<b>FLOORING</b>			
112. Clean concrete the floor	149.04 SF @	0.57 =	84.95
113. Tile floor covering	149.04 SF @	26.15 =	3,897.40
114. Add-on for diagonal tile installation	149.04 SF @	3.33 =	496.30
115. Grout sealer	149.04 SF @	2.97 =	442.65



## Skyline Adjusters, LLC

One World Trade Center, FL 85  
New York, NY 10007  
800-590-7293

### CONTINUED - Kitchen

DESCRIPTION	QTY	UNIT PRICE	TOTAL
<b><u>WALLS &amp; CEILING</u></b>			
116. Batt insulation - 4" - R13 - paper / foil faced	324.22 SF @		SEE FOOTPRINT
117. 5/8" drywall - hung, taped, floated, ready for paint (Walls)	324.22 SF @	5.49 =	1,779.97
118. Seal the walls w/PVA primer - one coat	324.22 SF @	1.64 =	531.72
119. Paint the walls - two coats	324.22 SF @	2.57 =	833.25
120. Baseboard - 3 1/4"	40.58 LF @	5.98 =	242.67
121. Seal (1 coat) & paint (2 coats) baseboard	40.58 LF @	6.00 =	243.48
122. Batt insulation - 10" - R30 - paper / foil faced	171.87 SF @		SEE FOOTPRINT
123. 5/8" drywall - hung, taped, floated, ready for paint (Ceiling)	171.87 SF @	5.49 =	943.57
124. Seal the ceiling w/PVA primer - one coat	171.87 SF @	1.64 =	281.87
125. Paint the ceiling - two coats	171.87 SF @	2.57 =	441.71
<b><u>DOORS &amp; WINDOWS</u></b>			
126. Vinyl window, horizontal sliding, 12-23 sf	1.00 EA @	1,057.21 =	1,057.21
127. Window stool & apron	5.00 LF @	12.95 =	64.75
128. Window trim set (casing & stop)	18.00 LF @	9.39 =	169.02
129. Seal & paint window opening (per side)	1.00 EA @	85.46 =	85.46
130. Exterior door - metal - insulated - flush or panel style	1.00 EA @	787.84 =	787.84
131. Door lockset & deadbolt - exterior	1.00 EA @	137.77 =	137.77
132. Door Hinges	1.00 EA @		INCLUDED
133. Door opening (jamb & casing) - 32"to36"wide - paint grade	1.00 EA @		INCLUDED
134. Brick Molding	1.00 EA @		INCLUDED
135. Seal & paint door opening (per side)	1.00 EA @	85.46 =	85.46
136. Prime & paint door slab only - exterior (per side)	2.00 EA @	116.10 =	232.20
137. Door threshold, aluminum	3.00 LF @	31.71 =	95.13
138. Bypass (sliding) door set - Colonist	1.00 EA @	527.90 =	527.90
139. Door Hardware	1.00 EA @		INCLUDED
140. Door Track & Rollers	1.00 EA @		INCLUDED
141. Seal 1coat & paint 2coat bypass dr set-slab only(per side)	2.00 EA @	226.21 =	452.42
142. Door opening (jamb & casing) - 36"to60"wide - paint grade	1.00 EA @	315.99 =	315.99
143. Seal & paint door or window opening - Large (per side)	2.00 EA @	105.05 =	210.10
<b><u>CABINERY &amp; COUNTERTOPS</u></b>			
144. Cabinetry - lower (base) units	13.42 LF @	530.63 =	7,121.05
145. Cabinet knob or pull	10.00 EA @	14.97 =	149.70
146. Cabinetry - upper (wall) units	12.50 LF @	384.90 =	4,811.25
147. Cabinet knob or pull	8.00 EA @	14.97 =	119.76
148. Add for prefinished crown molding per LF	12.50 LF @	16.77 =	209.63
149. Remove Countertop subdeck - plywood	26.84 SF @	1.12 =	30.06



## Skyline Adjusters, LLC

One World Trade Center, FL 85  
New York, NY 10007  
800-590-7293

### CONTINUED - Kitchen

DESCRIPTION	QTY	UNIT PRICE	TOTAL
150. Countertop - Granite or Marble	31.31 SF @	133.66 =	4,184.89
151. Add on Granite or Marble - edge treatment	17.42 LF @	35.56 =	619.46
152. Add on for undermount sink cutout & polish - double basin	1.00 EA @	426.56 =	426.56
153. Countertop - Granite or Marble - buff & polish	31.31 SF @	22.30 =	698.21
<b>APPLIANCES</b>			
154. Dishwasher	1.00 EA @	986.60 =	986.60
155. Dishwasher connection	1.00 EA @		SEE FOOTPRINT
156. Garbage disposer	1.00 EA @	383.23 =	383.23
157. Range - freestanding - electric	1.00 EA @	1,376.01 =	1,376.01
158. Range hood	1.00 EA @	359.78 =	359.78
159. Refrigerator - side by side - 25 to 30 cf	1.00 EA @	2,676.58 =	2,676.58
<b>MEPs</b>			
160. Heat/AC register - Mechanically attached	1.00 EA @	38.71 =	38.71
161. 220 volt outlet	1.00 EA @	60.76 =	60.76
162. 220 volt outlet cover	1.00 EA @	11.54 =	11.54
163. Ground fault interrupter (GFI) outlet	2.00 EA @	57.08 =	114.16
164. Outlet cover	2.00 EA @	5.72 =	11.44
165. Outlet	6.00 EA @	28.99 =	173.94
166. Outlet cover	6.00 EA @	5.72 =	34.32
167. Switch	2.00 EA @	30.22 =	60.44
168. Switch cover	2.00 EA @	5.72 =	11.44
169. Recessed light fixture	8.00 EA @	221.80 =	1,774.40
170. Light bulb	8.00 EA @	24.68 =	197.44
171. Sink - double basin	1.00 EA @	597.11 =	597.11
172. Sink drain assembly with stop	1.00 EA @	66.59 =	66.59
173. Sink faucet - Kitchen	1.00 EA @	406.10 =	406.10
174. Soap dispenser - surface mounted	1.00 EA @	103.14 =	103.14
175. P-trap assembly - ABS (plastic)	1.00 EA @		INCLUDED
176. Plumbing fixture supply line	2.00 EA @	30.50 =	61.00
177. Angle stop valve	2.00 EA @	59.11 =	118.22
<b>MISCELLANEOUS</b>			
178. Shelving - 12" - in place (Pantry)	26.00 LF @	17.60 =	457.60
179. Seal & paint wood shelving, 12" - 24" width	26.00 LF @	12.45 =	323.70





## Skyline Adjusters, LLC

One World Trade Center, FL 85  
 New York, NY 10007  
 800-590-7293

<b>Hall</b>		<b>Height: 8'</b>
<b>Door</b>	<b>2' 6" X 6' 8"</b>	<b>Opens into MASTER_BDRM</b>
<b>Door</b>	<b>2' 8" X 6' 8"</b>	<b>Opens into BDRM_2</b>
<b>Door</b>	<b>2' 8" X 6' 8"</b>	<b>Opens into BDRM_3</b>
<b>Door</b>	<b>2' 4" X 6' 8"</b>	<b>Opens into HALL_BATH</b>
<b>Missing Wall</b>	<b>3' 1" X 8'</b>	<b>Opens into KITCHEN</b>
<b>Subroom: Hall Closet (1)</b>		<b>Height: 8'</b>
<b>Door</b>	<b>2' 6" X 6' 8"</b>	<b>Opens into HALL</b>

DESCRIPTION	QTY	UNIT PRICE	TOTAL
-------------	-----	------------	-------

### INTERIOR FRAMING

180. Stud wall - 2" x 4" x 8' - 16" oc	57.42	LF @	38.95 =	2,236.51
181. Door & Window Headers	1.00	EA @		INCLUDED
182. Joist - ceiling - 2x6 - w/blocking - 16" oc	73.11	SF @		SEE FOOTPRINT

### FLOORING

183. Clean concrete the floor	73.11	SF @	0.57 =	41.67
184. Tile floor covering	73.11	SF @	26.15 =	1,911.83
185. Add-on for diagonal tile installation	73.11	SF @	3.33 =	243.46
186. Grout sealer	73.11	SF @	2.97 =	217.14

### WALLS & CEILING

187. 5/8" drywall - hung, taped, floated, ready for paint (Walls)	358.22	SF @	5.49 =	1,966.63
188. Seal the walls w/PVA primer - one coat	358.22	SF @	1.64 =	587.48
189. Paint the walls - two coats	358.22	SF @	2.57 =	920.63
190. Baseboard - 3 1/4"	42.25	LF @	5.98 =	252.66
191. Seal (1 coat) & paint (2 coats) baseboard	42.25	LF @	6.00 =	253.50
192. Batt insulation - 10" - R30 - paper / foil faced	73.11	SF @		SEE FOOTPRINT
193. 5/8" drywall - hung, taped, floated, ready for paint (Ceiling)	73.11	SF @	5.49 =	401.37
194. Seal the ceiling w/PVA primer - one coat	73.11	SF @	1.64 =	119.90
195. Paint the ceiling - two coats	73.11	SF @	2.57 =	187.89

### DOORS & WINDOWS

196. Interior door unit	1.00	EA @	490.20 =	490.20
197. Door knob - interior	1.00	EA @	69.89 =	69.89
198. Door Hinges	1.00	EA @		INCLUDED
199. Door opening (jamb & casing) - 32"to36"wide - paint grade	1.00	EA @		INCLUDED
200. Seal & paint door opening (per side)	2.00	EA @	85.46 =	170.92
201. Seal & paint door slab only (per side)	2.00	EA @	101.35 =	202.70

### MEPs

202. Heat/AC register - Mechanically attached	1.00	EA @	38.71 =	38.71
203. Outlet	2.00	EA @	28.99 =	57.98
204. Outlet cover	2.00	EA @	5.72 =	11.44
205. Switch	2.00	EA @	30.22 =	60.44
206. Switch cover	2.00	EA @	5.72 =	11.44
207. Recessed light fixture	4.00	EA @	221.80 =	887.20



## Skyline Adjusters, LLC

One World Trade Center, FL 85  
 New York, NY 10007  
 800-590-7293

### CONTINUED - Hall

DESCRIPTION	QTY	UNIT PRICE	TOTAL
208. Light bulb	4.00 EA @	24.68 =	98.72
<b>MISCELLANEOUS</b>			
209. Seal & paint closet shelving - linen closet	1.00 EA @	241.53 =	241.53
210. Closet package - hall/linen	1.00 EA @	295.70 =	295.70

**Hall Bath** **Height: 8'**

**Door** **2' 4" X 6' 8"** **Opens into HALL**

**Subroom: Tub (1)** **Height: 8'**

**Missing Wall** **5' X 8'** **Opens into HALL\_BATH**

DESCRIPTION	QTY	UNIT PRICE	TOTAL
<b>INTERIOR FRAMING</b>			
211. Stud wall - 2" x 4" x 8' - 16" oc	14.50 LF @	38.95 =	564.78
212. Door & Window Headers	1.00 EA @		INCLUDED
213. Joist - ceiling - 2x6 - w/blocking - 16" oc	47.50 SF @		SEE FOOTPRINT
<b>FLOORING</b>			
214. Clean concrete the surface area	33.75 SF @	0.57 =	19.24
215. Tile floor covering	33.75 SF @	26.15 =	882.56
216. Add-on for diagonal tile installation	33.75 SF @	3.33 =	112.39
217. Grout sealer	33.75 SF @	2.97 =	100.24
<b>WALLS &amp; CEILING</b>			
218. Batt insulation - 4" - R13 - paper / foil faced	216.44 SF @		SEE FOOTPRINT
219. 5/8" drywall - hung, taped, floated, ready for paint (Walls)	132.44 SF @	5.49 =	727.10
220. Seal the surface area w/PVA primer - one coat	132.44 SF @	1.64 =	217.20
221. Paint the surface area - two coats	132.44 SF @	2.57 =	340.37
222. Mirror - 1/4" plate glass	16.00 SF @	41.47 =	663.52
223. Baseboard - 3 1/4"	16.17 LF @	5.98 =	96.70
224. Seal (1 coat) & paint (2 coats) baseboard	16.17 LF @	6.00 =	97.02
225. Batt insulation - 10" - R30 - paper / foil faced	47.50 SF @		SEE FOOTPRINT
226. 5/8" drywall - hung, taped, floated, ready for paint (Ceiling)	47.50 SF @	5.49 =	260.78
227. Seal the ceiling w/PVA primer - one coat	47.50 SF @	1.64 =	77.90
228. Paint the ceiling - two coats	47.50 SF @	2.57 =	122.08
<b>DOORS &amp; WINDOWS</b>			
229. Interior door unit	1.00 EA @	490.20 =	490.20



## Skyline Adjusters, LLC

One World Trade Center, FL 85  
New York, NY 10007  
800-590-7293

### CONTINUED - Hall Bath

DESCRIPTION	QTY	UNIT PRICE	TOTAL
230. Door knob - interior	1.00 EA @	69.89 =	69.89
231. Door Hinges	1.00 EA @		INCLUDED
232. Door opening (jamb & casing) - 32"to36"wide - paint grade	1.00 EA @		INCLUDED
233. Seal & paint door opening (per side)	2.00 EA @	85.46 =	170.92
234. Seal & paint door slab only (per side)	2.00 EA @	101.35 =	202.70
<b><u>CABINERY &amp; COUNTERTOPS</u></b>			
235. Vanity with granite or marble top	4.00 LF @	953.75 =	3,815.00
236. Add on for undermount sink cutout & polish - single basin	1.00 EA @	283.62 =	283.62
237. Cabinet knob or pull	5.00 EA @	14.97 =	74.85
<b><u>MEPs</u></b>			
238. Bathroom ventilation fan w/light	1.00 EA @	265.00 =	265.00
239. Heat/AC register - Mechanically attached	1.00 EA @	38.71 =	38.71
240. Ground fault interrupter (GFI) outlet	1.00 EA @	57.08 =	57.08
241. Outlet cover	1.00 EA @	5.72 =	5.72
242. Switch	2.00 EA @	30.22 =	60.44
243. Switch cover	2.00 EA @	5.72 =	11.44
244. Light bar - 4 lights	1.00 EA @	152.99 =	152.99
245. Light bulb	4.00 EA @	24.68 =	98.72
246. Bathtub	1.00 EA @	1,744.18 =	1,744.18
247. 1/4" Cement board	84.00 SF @	10.73 =	901.32
248. Tile tub surround - 60 to 75 SF	1.00 EA @	3,296.75 =	3,296.75
249. Bathtub enclosure - sliding glass doors	1.00 EA @	785.80 =	785.80
250. Seal grout on tile wall	84.00 SF @	3.24 =	272.16
251. Sink - single	1.00 EA @	411.77 =	411.77
252. Sink faucet - Bathroom	1.00 EA @	335.82 =	335.82
253. P-trap assembly - ABS (plastic)	1.00 EA @		INCLUDED
254. Plumbing fixture supply line	2.00 EA @	30.50 =	61.00
255. Angle stop valve	2.00 EA @	59.11 =	118.22
256. Toilet	1.00 EA @	780.21 =	780.21
257. Toilet flange	1.00 EA @	379.06 =	379.06
258. Wax Ring	1.00 EA @		INCLUDED
259. Plumbing fixture supply line	1.00 EA @	30.50 =	30.50
260. Angle stop valve	1.00 EA @	59.11 =	59.11
261. Toilet seat	1.00 EA @	84.41 =	84.41
<b><u>MISCELLANEOUS</u></b>			
262. Towel bar	1.00 EA @	47.89 =	47.89
263. Towel ring	1.00 EA @	47.95 =	47.95



## Skyline Adjusters, LLC

One World Trade Center, FL 85  
 New York, NY 10007  
 800-590-7293

### CONTINUED - Hall Bath

DESCRIPTION	QTY	UNIT PRICE	TOTAL
264. Toilet paper holder	1.00 EA @	43.69 =	43.69

#### Master Bdrm

Height: 8'

Door	2' 4" X 6' 8"	Opens into MASTER_BATH
Door	2' 6" X 6' 8"	Opens into HALL
Window	6' 4" X 4'	Opens into Exterior
Window	2' 8" X 4'	Opens into Exterior

DESCRIPTION	QTY	UNIT PRICE	TOTAL
-------------	-----	------------	-------

#### INTERIOR FRAMING

265. Stud wall - 2" x 4" x 8' - 16" oc	31.51 LF @	38.95 =	1,227.31
266. Door & Window Headers	1.00 EA @		INCLUDED
267. Joist - ceiling - 2x6 - w/blocking - 16" oc	196.58 SF @		SEE FOOTPRINT

#### FLOORING

268. Clean concrete the floor	196.58 SF @	0.57 =	112.05
269. Tile floor covering	196.58 SF @	26.15 =	5,140.57
270. Add-on for diagonal tile installation	196.58 SF @	3.33 =	654.61
271. Grout sealer	196.58 SF @	2.97 =	583.84

#### WALLS & CEILING

272. Batt insulation - 4" - R13 - paper / foil faced	436.01 SF @		SEE FOOTPRINT
273. 5/8" drywall - hung, taped, floated, ready for paint (Walls)	436.01 SF @	5.49 =	2,393.69
274. Seal the walls w/PVA primer - one coat	436.01 SF @	1.64 =	715.06
275. Paint the walls - two coats	436.01 SF @	2.57 =	1,120.55
276. Baseboard - 3 1/4"	58.20 LF @	5.98 =	348.04
277. Seal (1 coat) & paint (2 coats) baseboard	58.20 LF @	6.00 =	349.20
278. Batt insulation - 10" - R30 - paper / foil faced	196.58 SF @		SEE FOOTPRINT
279. 5/8" drywall - hung, taped, floated, ready for paint (Ceiling)	196.58 SF @	5.49 =	1,079.22
280. Seal the ceiling w/PVA primer - one coat	196.58 SF @	1.64 =	322.39
281. Paint the ceiling - two coats	196.58 SF @	2.57 =	505.21

#### DOORS & WINDOWS

282. Vinyl window, horizontal sliding, 24-32 sf	1.00 EA @	1,439.48 =	1,439.48
283. Window stool & apron	5.00 LF @	12.95 =	64.75
284. Window trim set (casing & stop)	18.00 LF @	9.39 =	169.02
285. Seal & paint window opening (per side)	1.00 EA @	85.46 =	85.46



## Skyline Adjusters, LLC

One World Trade Center, FL 85  
 New York, NY 10007  
 800-590-7293

### CONTINUED - Master Bdrm

DESCRIPTION	QTY	UNIT PRICE	TOTAL
286. Window blind - PVC - 2" - 7.1 to 14 SF	1.00 EA @	155.41 =	155.41
287. Vinyl window, horizontal sliding, 3-11 sf	1.00 EA @	823.76 =	823.76
288. Window stool & apron	2.67 LF @	12.95 =	34.58
289. Window trim set (casing & stop)	13.33 LF @	9.39 =	125.17
290. Seal & paint window opening (per side)	1.00 EA @	85.46 =	85.46
291. Window blind - PVC - 2" - 20.1 to 32 SF	1.00 EA @	262.15 =	262.15
292. Interior door unit	1.00 EA @	490.20 =	490.20
293. Door knob - interior	1.00 EA @	69.89 =	69.89
294. Door Hinges	1.00 EA @		INCLUDED
295. Door opening (jamb & casing) - 32"to36"wide - paint grade	1.00 EA @		INCLUDED
296. Seal & paint door opening (per side)	2.00 EA @	85.46 =	170.92
297. Seal & paint door slab only (per side)	2.00 EA @	101.35 =	202.70
<b>MEPs</b>			
298. Heat/AC register - Mechanically attached	1.00 EA @	38.71 =	38.71
299. Outlet	4.00 EA @	28.99 =	115.96
300. Outlet cover	4.00 EA @	5.72 =	22.88
301. Switch	2.00 EA @	30.22 =	60.44
302. Switch cover	2.00 EA @	5.72 =	11.44
303. Recessed light fixture	6.00 EA @	221.80 =	1,330.80
304. Light bulb	6.00 EA @	24.68 =	148.08
305. Ceiling fan & light	1.00 EA @	613.38 =	613.38
306. Light bulb	3.00 EA @	2.31 =	6.93

#### Master Bath

Height: 8'

Missing Wall

2' 4" X 8'

Opens into MASTER\_CLOSE

Door

2' 4" X 6' 8"

Opens into MASTER\_BDRM

Subroom: Tub (1)

Height: 8'

Missing Wall

6' X 8'

Opens into MASTER\_BATH

Window

4' 3" X 1' 6"

Opens into Exterior

DESCRIPTION	QTY	UNIT PRICE	TOTAL
-------------	-----	------------	-------

#### INTERIOR FRAMING

307. Stud wall - 2" x 4" x 8' - 16" oc	18.42 LF @	38.95 =	717.46
308. Door & Window Headers	1.00 EA @		INCLUDED



## Skyline Adjusters, LLC

One World Trade Center, FL 85  
New York, NY 10007  
800-590-7293

### CONTINUED - Master Bath

DESCRIPTION	QTY	UNIT PRICE	TOTAL
309. Joist - ceiling - 2x6 - w/blocking - 16" oc	81.50 SF @		SEE FOOTPRINT
<b>FLOORING</b>			
310. Clean concrete the surface area	63.50 SF @	0.57 =	36.20
311. Tile floor covering	63.50 SF @	26.15 =	1,660.53
312. Add-on for diagonal tile installation	63.50 SF @	3.33 =	211.46
313. Grout sealer	63.50 SF @	2.97 =	188.60
<b>WALLS &amp; CEILING</b>			
314. Batt insulation - 4" - R13 - paper / foil faced	272.74 SF @		SEE FOOTPRINT
315. 5/8" drywall - hung, taped, floated, ready for paint (Walls)	183.11 SF @	5.49 =	1,005.27
316. Seal the surface area w/PVA primer - one coat	183.11 SF @	1.64 =	300.30
317. Paint the surface area - two coats	183.11 SF @	2.57 =	470.59
318. Mirror - 1/4" plate glass	32.00 SF @	41.47 =	1,327.04
319. Baseboard - 3 1/4"	22.50 LF @	5.98 =	134.55
320. Seal (1 coat) & paint (2 coats) baseboard	22.50 LF @	6.00 =	135.00
321. Batt insulation - 10" - R30 - paper / foil faced	81.50 SF @		SEE FOOTPRINT
322. 5/8" drywall - hung, taped, floated, ready for paint (Ceiling)	81.50 SF @	5.49 =	447.44
323. Seal the ceiling w/PVA primer - one coat	81.50 SF @	1.64 =	133.66
324. Paint the ceiling - two coats	81.50 SF @	2.57 =	209.46
<b>DOORS &amp; WINDOWS</b>			
325. Vinyl window, horizontal sliding, 3-11 sf	1.00 EA @	823.76 =	823.76
326. Window stool & apron	4.25 LF @	12.95 =	55.04
327. Window trim set (casing & stop)	11.50 LF @	9.39 =	107.99
328. Seal & paint window opening (per side)	1.00 EA @	85.46 =	85.46
329. Pocket door unit - Colonist	1.00 EA @	560.60 =	560.60
330. Door Jamb	1.00 EA @		INCLUDED
331. Casing - 2 1/4"	32.66 LF @	3.84 =	125.41
332. Seal & paint door opening (per side)	2.00 EA @	85.46 =	170.92
333. Seal & paint door slab only (per side)	2.00 EA @	101.35 =	202.70
334. Pocket door latch	1.00 EA @	44.18 =	44.18
<b>CABINETRY &amp; COUNTERTOPS</b>			
335. Vanity with granite or marble top	8.00 LF @	953.75 =	7,630.00
336. Add on for undermount sink cutout & polish - single basin	2.00 EA @	283.62 =	567.24
337. Cabinet knob or pull	10.00 EA @	14.97 =	149.70
<b>MEPs</b>			
338. Bathroom ventilation fan	1.00 EA @	181.95 =	181.95
339. Heat/AC register - Mechanically attached	1.00 EA @	38.71 =	38.71
340. Ground fault interrupter (GFI) outlet	2.00 EA @	57.08 =	114.16



**Skyline Adjusters, LLC**

One World Trade Center, FL 85  
 New York, NY 10007  
 800-590-7293

**CONTINUED - Master Bath**

<b>DESCRIPTION</b>	<b>QTY</b>	<b>UNIT PRICE</b>	<b>TOTAL</b>
341. Outlet cover	2.00 EA @	5.72 =	11.44
342. Switch	2.00 EA @	30.22 =	60.44
343. Switch cover	2.00 EA @	5.72 =	11.44
344. Recessed light fixture	4.00 EA @	221.80 =	887.20
345. Light bulb	4.00 EA @	24.68 =	98.72
346. Light bar - 8 lights	1.00 EA @	208.56 =	208.56
347. Light bulb	8.00 EA @	24.68 =	197.44
348. Bathtub	1.00 EA @	1,744.18 =	1,744.18
349. 1/4" Cement board	89.63 SF @	10.73 =	961.73
350. Tile tub surround - 60 to 75 SF	1.00 EA @	3,296.75 =	3,296.75
351. Bathtub enclosure - sliding glass doors	1.00 EA @	785.80 =	785.80
352. Seal grout on tile wall	89.63 SF @	3.24 =	290.40
353. Sink - single	2.00 EA @	411.77 =	823.54
354. Sink faucet - Bathroom	2.00 EA @	335.82 =	671.64
355. P-trap assembly - ABS (plastic)	2.00 EA @		INCLUDED
356. Plumbing fixture supply line	4.00 EA @	30.50 =	122.00
357. Angle stop valve	4.00 EA @	59.11 =	236.44
358. Toilet	1.00 EA @	780.21 =	780.21
359. Toilet flange	1.00 EA @	379.06 =	379.06
360. Wax Ring	1.00 EA @		INCLUDED
361. Plumbing fixture supply line	1.00 EA @	30.50 =	30.50
362. Angle stop valve	1.00 EA @	59.11 =	59.11
363. Toilet seat	1.00 EA @	84.41 =	84.41
<b><u>MISCELLANEOUS</u></b>			
364. Towel bar	2.00 EA @	47.89 =	95.78
365. Towel ring	1.00 EA @	47.95 =	47.95
366. Toilet paper holder	1.00 EA @	43.69 =	43.69

**Master Closet**

**Height: 8'**

**Missing Wall**

**2' 4" X 8'**

**Opens into MASTER\_BATH**

<b>DESCRIPTION</b>	<b>QTY</b>	<b>UNIT PRICE</b>	<b>TOTAL</b>
--------------------	------------	-------------------	--------------

**INTERIOR FRAMING**

367. Stud wall - 2" x 4" x 8' - 16" oc	11.00 LF @	38.95 =	428.45
--	------------	---------	--------



## Skyline Adjusters, LLC

One World Trade Center, FL 85  
 New York, NY 10007  
 800-590-7293

### CONTINUED - Master Closet

DESCRIPTION	QTY	UNIT PRICE	TOTAL
368. Joist - ceiling - 2x6 - w/blocking - 16" oc	37.00 SF @		SEE FOOTPRINT
<b>FLOORING</b>			
369. Clean concrete the floor	37.00 SF @	0.57 =	21.09
370. Tile floor covering	37.00 SF @	26.15 =	967.55
371. Add-on for diagonal tile installation	37.00 SF @	3.33 =	123.21
372. Grout sealer	37.00 SF @	2.97 =	109.89
<b>WALLS &amp; CEILING</b>			
373. Batt insulation - 4" - R13 - paper / foil faced	176.00 SF @		SEE FOOTPRINT
374. 5/8" drywall - hung, taped, floated, ready for paint (Walls)	176.00 SF @	5.49 =	966.24
375. Seal the walls w/PVA primer - one coat	176.00 SF @	1.64 =	288.64
376. Paint the walls - two coats	176.00 SF @	2.57 =	452.32
377. Baseboard - 3 1/4"	22.00 LF @	5.98 =	131.56
378. Seal (1 coat) & paint (2 coats) baseboard	22.00 LF @	6.00 =	132.00
379. Batt insulation - 10" - R30 - paper / foil faced	37.00 SF @		SEE FOOTPRINT
380. 5/8" drywall - hung, taped, floated, ready for paint (Ceiling)	37.00 SF @	5.49 =	203.13
381. Seal the ceiling w/PVA primer - one coat	37.00 SF @	1.64 =	60.68
382. Paint the ceiling - two coats	37.00 SF @	2.57 =	95.09
<b>MEPs</b>			
383. Heat/AC register - Mechanically attached	1.00 EA @	38.71 =	38.71
384. Switch	1.00 EA @	30.22 =	30.22
385. Switch cover	1.00 EA @	5.72 =	5.72
386. Recessed light fixture	2.00 EA @	221.80 =	443.60
387. Light bulb	2.00 EA @	24.68 =	49.36
<b>MISCELLANEOUS</b>			
388. Shelving - 12" - in place (Pantry)	36.66 LF @	17.60 =	645.22
389. Seal & paint wood shelving, 12"- 24" width	36.66 LF @	12.45 =	456.42

<b>Bdrm 2</b>			<b>Height: 8'</b>
<b>Door</b>	<b>2' 8" X 6' 8"</b>	<b>Opens into HALL</b>	
<b>Window</b>	<b>5' 2" X 4'</b>	<b>Opens into Exterior</b>	
<b>Subroom: Closet (1)</b>			<b>Height: 8'</b>
<b>Door</b>	<b>5' X 6' 8"</b>	<b>Opens into BDRM_2</b>	

DESCRIPTION	QTY	UNIT PRICE	TOTAL
-------------	-----	------------	-------





## Skyline Adjusters, LLC

One World Trade Center, FL 85  
New York, NY 10007  
800-590-7293

### CONTINUED - Bdrm 2

DESCRIPTION	QTY	UNIT PRICE	TOTAL
<b>INTERIOR FRAMING</b>			
390. Stud wall - 2" x 4" x 8' - 16" oc	29.90 LF @	38.95 =	1,164.61
391. Door & Window Headers	1.00 EA @		INCLUDED
392. Joist - ceiling - 2x6 - w/blocking - 16" oc	116.41 SF @		SEE FOOTPRINT
<b>FLOORING</b>			
393. Clean concrete the floor	116.41 SF @	0.57 =	66.35
394. Tile floor covering	116.41 SF @	26.15 =	3,044.12
395. Add-on for diagonal tile installation	116.41 SF @	3.33 =	387.65
396. Grout sealer	116.41 SF @	2.97 =	345.74
<b>WALLS &amp; CEILING</b>			
397. Batt insulation - 4" - R13 - paper / foil faced	373.37 SF @		SEE FOOTPRINT
398. 5/8" drywall - hung, taped, floated, ready for paint (Walls)	373.37 SF @	5.49 =	2,049.80
399. Seal the walls w/PVA primer - one coat	373.37 SF @	1.64 =	612.33
400. Paint the walls - two coats	373.37 SF @	2.57 =	959.56
401. Baseboard - 3 1/4"	47.14 LF @	5.98 =	281.90
402. Seal (1 coat) & paint (2 coats) baseboard	47.14 LF @	6.00 =	282.84
403. Batt insulation - 10" - R30 - paper / foil faced	116.41 SF @		SEE FOOTPRINT
404. 5/8" drywall - hung, taped, floated, ready for paint (Ceiling)	116.41 SF @	5.49 =	639.09
405. Seal the ceiling w/PVA primer - one coat	116.41 SF @	1.64 =	190.91
406. Paint the ceiling - two coats	116.41 SF @	2.57 =	299.17
<b>DOORS &amp; WINDOWS</b>			
407. Vinyl window, horizontal sliding, 12-23 sf	1.00 EA @	724.81 =	724.81
408. Window stool & apron	5.17 LF @	12.95 =	66.95
409. Window trim set (casing & stop)	18.33 LF @	9.39 =	172.12
410. Seal & paint window opening (per side)	1.00 EA @	85.46 =	85.46
411. Window blind - PVC - 2" - 14.1 to 20 SF	1.00 EA @	198.62 =	198.62
412. Interior door unit	1.00 EA @	490.20 =	490.20
413. Door knob - interior	1.00 EA @	69.89 =	69.89
414. Door Hinges	1.00 EA @		INCLUDED
415. Door opening (jamb & casing) - 32"to36"wide - paint grade	1.00 EA @		INCLUDED
416. Seal & paint door opening (per side)	2.00 EA @	85.46 =	170.92
417. Seal & paint door slab only (per side)	2.00 EA @	101.35 =	202.70
418. Bypass (sliding) door set - Colonist	1.00 EA @	527.90 =	527.90
419. Door Hardware	1.00 EA @		INCLUDED
420. Door Track & Rollers	1.00 EA @		INCLUDED
421. Seal 1coat & paint 2coat bypass dr set-slab only(per side)	2.00 EA @	226.21 =	452.42
422. Door opening (jamb & casing) - 36"to60"wide - paint grade	1.00 EA @	315.99 =	315.99



## Skyline Adjusters, LLC

One World Trade Center, FL 85  
 New York, NY 10007  
 800-590-7293

### CONTINUED - Bdrm 2

DESCRIPTION	QTY	UNIT PRICE	TOTAL
423. Seal & paint door or window opening - Large (per side)	2.00 EA @	105.05 =	210.10
<b>MEPs</b>			
424. Heat/AC register - Mechanically attached	1.00 EA @	38.71 =	38.71
425. Outlet	4.00 EA @	28.99 =	115.96
426. Outlet cover	4.00 EA @	5.72 =	22.88
427. Switch	2.00 EA @	30.22 =	60.44
428. Switch cover	2.00 EA @	5.72 =	11.44
429. Recessed light fixture	4.00 EA @	221.80 =	887.20
430. Light bulb	4.00 EA @	24.68 =	98.72
431. Ceiling fan & light	1.00 EA @	613.38 =	613.38
432. Light bulb	3.00 EA @	2.31 =	6.93
<b>MISCELLANEOUS</b>			
433. Shelving - 12" - in place	6.00 LF @	17.60 =	105.60
434. Seal & paint wood shelving, 12"- 24" width	6.00 LF @	12.45 =	74.70

<b>Bdrm 3</b>			<b>Height: 8'</b>
<b>Window</b>	<b>5' 2" X 4'</b>	<b>Opens into Exterior</b>	
<b>Door</b>	<b>2' 8" X 6' 8"</b>	<b>Opens into HALL</b>	
<b>Subroom: Closet (1)</b>			<b>Height: 8'</b>
<b>Door</b>	<b>5' X 6' 8"</b>	<b>Opens into BDRM_3</b>	

DESCRIPTION	QTY	UNIT PRICE	TOTAL
<b>INTERIOR FRAMING</b>			
435. Stud wall - 2" x 4" x 8' - 16" oc	29.83 LF @	38.95 =	1,161.88
436. Door & Window Headers	1.00 EA @		INCLUDED
437. Joist - ceiling - 2x6 - w/blocking - 16" oc	114.83 SF @		SEE FOOTPRINT
<b>FLOORING</b>			
438. Clean concrete the floor	114.83 SF @	0.57 =	65.45
439. Tile floor covering	114.83 SF @	26.15 =	3,002.80
440. Add-on for diagonal tile installation	114.83 SF @	3.33 =	382.38
441. Grout sealer	114.83 SF @	2.97 =	341.05
<b>WALLS &amp; CEILING</b>			
442. Batt insulation - 4" - R13 - paper / foil faced	372.22 SF @		SEE FOOTPRINT
443. 5/8" drywall - hung, taped, floated, ready for paint (Walls)	372.22 SF @	5.49 =	2,043.49



## Skyline Adjusters, LLC

One World Trade Center, FL 85  
New York, NY 10007  
800-590-7293

### CONTINUED - Bdrm 3

DESCRIPTION	QTY	UNIT PRICE	TOTAL
444. Seal the walls w/PVA primer - one coat	372.22 SF @	1.64 =	610.44
445. Paint the walls - two coats	372.22 SF @	2.57 =	956.61
446. Baseboard - 3 1/4"	47.00 LF @	5.98 =	281.06
447. Seal (1 coat) & paint (2 coats) baseboard	47.00 LF @	6.00 =	282.00
448. Batt insulation - 10" - R30 - paper / foil faced	114.83 SF @		SEE FOOTPRINT
449. 5/8" drywall - hung, taped, floated, ready for paint (Ceiling)	114.83 SF @	5.49 =	630.42
450. Seal the ceiling w/PVA primer - one coat	114.83 SF @	1.64 =	188.32
451. Paint the ceiling - two coats	114.83 SF @	2.57 =	295.11
<b><u>DOORS &amp; WINDOWS</u></b>			
452. Vinyl window, horizontal sliding, 12-23 sf	1.00 EA @	724.81 =	724.81
453. Window stool & apron	5.17 LF @	12.95 =	66.95
454. Window trim set (casing & stop)	18.33 LF @	9.39 =	172.12
455. Seal & paint window opening (per side)	1.00 EA @	85.46 =	85.46
456. Window blind - PVC - 2" - 14.1 to 20 SF	1.00 EA @	198.62 =	198.62
457. Interior door unit	1.00 EA @	490.20 =	490.20
458. Door knob - interior	1.00 EA @	69.89 =	69.89
459. Door Hinges	1.00 EA @		INCLUDED
460. Door opening (jamb & casing) - 32"to36"wide - paint grade	1.00 EA @		INCLUDED
461. Seal & paint door opening (per side)	2.00 EA @	85.46 =	170.92
462. Seal & paint door slab only (per side)	2.00 EA @	101.35 =	202.70
463. Bypass (sliding) door set - Colonist	1.00 EA @	527.90 =	527.90
464. Door Hardware	1.00 EA @		INCLUDED
465. Door Track & Rollers	1.00 EA @		INCLUDED
466. Seal 1coat & paint 2coat bypass dr set-slab only(per side)	2.00 EA @	226.21 =	452.42
467. Door opening (jamb & casing) - 36"to60"wide - paint grade	1.00 EA @	315.99 =	315.99
468. Seal & paint door or window opening - Large (per side)	2.00 EA @	105.05 =	210.10
<b><u>MEPs</u></b>			
469. Heat/AC register - Mechanically attached	1.00 EA @	38.71 =	38.71
470. Outlet	4.00 EA @	28.99 =	115.96
471. Outlet cover	4.00 EA @	5.72 =	22.88
472. Switch	2.00 EA @	30.22 =	60.44
473. Switch cover	2.00 EA @	5.72 =	11.44
474. Recessed light fixture	4.00 EA @	221.80 =	887.20
475. Light bulb	4.00 EA @	24.68 =	98.72
476. Ceiling fan & light	1.00 EA @	613.38 =	613.38
477. Light bulb	3.00 EA @	2.31 =	6.93

### **MISCELLANEOUS**

HAWAII-RESIDENTIAL-X

10/10/2023

Page: 19



## Skyline Adjusters, LLC

One World Trade Center, FL 85  
 New York, NY 10007  
 800-590-7293

### CONTINUED - Bdrm 3

DESCRIPTION	QTY	UNIT PRICE	TOTAL
478. Shelving - 12" - in place	6.00 LF @	17.60 =	105.60
479. Seal & paint wood shelving, 12" - 24" width	6.00 LF @	12.45 =	74.70

Garage			Height: 8'
Door	16' 6" X 7'	Opens into Exterior	
Door	2' 8" X 6' 8"	Opens into Exterior	
Window	1' 2" X 4'	Opens into Exterior	
Door	2' 8" X 6' 8"	Opens into DINING	

DESCRIPTION	QTY	UNIT PRICE	TOTAL
<b>INTERIOR FRAMING</b>			
480. Stud wall - 2" x 4" x 8' - 16" oc	46.83 LF @	38.95 =	1,824.03
481. Door & Window Headers	1.00 EA @		INCLUDED
482. Joist - ceiling - 2x6 - w/blocking - 16" oc	513.61 SF @		SEE FOOTPRINT
<b>FLOORING</b>			
483. Floor Slab	1.00 EA @		C FOUNDATION
484. Concrete wall - labor & materials - Reinforced (Garage Stem Wall)	2.75 CY @	886.03 =	2,436.58
<b>WALLS &amp; CEILING</b>			
485. Batt insulation - 4" - R13 - paper / foil faced	593.61 SF @		SEE FOOTPRINT
486. 5/8" drywall - hung, taped, floated, ready for paint (Walls)	593.61 SF @	5.49 =	3,258.92
487. Seal the walls w/PVA primer - one coat	593.61 SF @	1.64 =	973.52
488. Paint the walls - two coats	593.61 SF @	2.57 =	1,525.58
489. Batt insulation - 10" - R30 - paper / foil faced	513.61 SF @		SEE FOOTPRINT
490. 5/8" drywall - hung, taped, floated, ready for paint (Ceiling)	513.61 SF @	5.49 =	2,819.72
491. Seal the ceiling w/PVA primer - one coat	513.61 SF @	1.64 =	842.32
492. Paint the ceiling - two coats	513.61 SF @	2.57 =	1,319.98
<b>DOORS &amp; WINDOWS</b>			
493. Wood door - lauan face, fire rated (mineral fiber core)	1.00 EA @	643.92 =	643.92
494. Door knob - interior	1.00 EA @	69.89 =	69.89
495. Door Hinges	1.00 EA @		0.00
496. Door opening (jamb & casing) - 32"to36"wide - paint grade	1.00 EA @	266.84 =	266.84
497. Seal & paint door opening (per side)	2.00 EA @	85.46 =	170.92
498. Seal & paint door slab only (per side)	2.00 EA @	101.35 =	202.70
499. Exterior door - metal - insulated - flush or panel style	1.00 EA @	787.84 =	787.84



## Skyline Adjusters, LLC

One World Trade Center, FL 85  
New York, NY 10007  
800-590-7293

### CONTINUED - Garage

DESCRIPTION	QTY	UNIT PRICE	TOTAL
500. Door lockset & deadbolt - exterior	1.00 EA @	137.77 =	137.77
501. Door Hinges	1.00 EA @		INCLUDED
502. Door opening (jamb & casing) - 32"to36"wide - paint grade	1.00 EA @		INCLUDED
503. Brick Molding	1.00 EA @		INCLUDED
504. Seal & paint door opening (per side)	1.00 EA @	85.46 =	85.46
505. Prime & paint door slab only - exterior (per side)	2.00 EA @	116.10 =	232.20
506. Door threshold, aluminum	3.00 LF @	31.71 =	95.13
507. Overhead door & hardware - 16' x 7'	1.00 EA @	3,181.11 =	3,181.11
508. Overhead door track	1.00 LF @		INCLUDED
509. Overhead door bottom panel weather seal w/track	16.00 LF @	19.78 =	316.48
510. Vinyl window - casement, 6-8 sf	1.00 EA @	920.60 =	920.60
511. Window stool & apron	2.00 LF @	12.95 =	25.90
512. Window trim set (casing & stop)	12.00 LF @	9.39 =	112.68
513. Seal & paint window opening (per side)	1.00 EA @	85.46 =	85.46
<b>MEPs</b>			
514. 220 volt outlet	1.00 EA @	60.76 =	60.76
515. 220 volt outlet cover	1.00 EA @	11.54 =	11.54
516. Outlet	4.00 EA @	28.99 =	115.96
517. Outlet cover	4.00 EA @	5.72 =	22.88
518. Switch	2.00 EA @	30.22 =	60.44
519. Switch cover	2.00 EA @	5.72 =	11.44
520. Recessed light fixture	2.00 EA @	221.80 =	443.60
521. Light bulb	2.00 EA @	24.68 =	49.36
522. Overhead (garage) door opener	1.00 EA @	853.49 =	853.49
523. Remote unit for overhead door opener	1.00 EA @		INCLUDED
524. Overhead (garage) door opener - sensors only (per pair)	1.00 EA @		INCLUDED
525. Wall-Mount Button for OH Door	1.00 EA @		INCLUDED
526. Keyless entry pad for overhead door opener	1.00 EA @	108.96 =	108.96
527. Water heater - 50 gallon - Electric - 9 yr	1.00 EA @	1,823.85 =	1,823.85
528. Electro-Mechanical Timer (Wall Mounted)	1.00 EA @	216.66 =	216.66
529. Water heater overflow drain pan	1.00 EA @	82.95 =	82.95
530. Water heater connector line - 3/4" flexible tubing	1.00 EA @	76.71 =	76.71
531. Water heater seismic strap kit - up to 55 gallon	1.00 EA @	87.74 =	87.74
532. Water heater platform - wood frame	1.00 EA @	566.01 =	566.01
533. Dryer - Electric	1.00 EA @	1,683.44 =	1,683.44
534. Clothes dryer vent - installed	1.00 EA @	112.02 =	112.02
535. Washer/Washing Machine - Top-loading	1.00 EA @	1,462.70 =	1,462.70
HAWAII-RESIDENTIAL-X		10/10/2023	Page: 21



## Skyline Adjusters, LLC

One World Trade Center, FL 85  
 New York, NY 10007  
 800-590-7293

### CONTINUED - Garage

DESCRIPTION	QTY	UNIT PRICE	TOTAL
536. Washing machine outlet box with valves	1.00 EA @	348.63 =	348.63
537. Washing machine hose line - rubber (per pair)	1.00 EA @	56.26 =	56.26
538. Laundry drip pan - single appliance pan - Plastic	1.00 EA @	125.75 =	125.75
539. Laundry tub	1.00 EA @	692.82 =	692.82
540. Service sink faucet	1.00 EA @	544.21 =	544.21
541. P-trap assembly - ABS (plastic)	1.00 EA @		INCLUDED
542. Plumbing fixture supply line	2.00 EA @	30.50 =	61.00
543. Angle stop valve	2.00 EA @	59.11 =	118.22

### EXTERIOR ELEVATIONS

#### EXTERIOR ELEVATIONS

DESCRIPTION	QTY	UNIT PRICE	TOTAL
<u>REMEDIATION</u>			
<u>GROUND LEVEL</u>			
<u>WALLS</u>			
<u>DOORS &amp; WINDOWS</u>			
<u>MEPs</u>			
<u>MISCELLANEOUS</u>			

#### FRONT ELEVATION

Formula Elevation 37' 1" x 10' x 0"

Missing Wall - Goes to neither Floor/Ceiling	6' 4" X 4'	Opens into Exterior
Missing Wall - Goes to Floor	3' X 6' 8"	Opens into Exterior
Missing Wall - Goes to Floor	16' 6" X 7'	Opens into Exterior

DESCRIPTION	QTY	UNIT PRICE	TOTAL
544. House wrap (air/moisture barrier)	210.00 SF @	0.57 =	119.70
545. Metal lath & stucco	210.00 SF @	10.87 =	2,282.70
546. Soffit & fascia - wood - 2' overhang	37.08 LF @	23.97 =	888.81
547. Prime & paint exterior soffit - wood	74.17 SF @	5.95 =	441.31
548. Prime & paint exterior fascia - wood, 6"- 8" wide	37.08 LF @	5.84 =	216.55
549. Gutter / downspout - aluminum - up to 5"	45.08 LF @	14.34 =	646.45



## Skyline Adjusters, LLC

One World Trade Center, FL 85  
 New York, NY 10007  
 800-590-7293

### CONTINUED - FRONT ELEVATION

DESCRIPTION	QTY	UNIT PRICE	TOTAL
550. Storm door assembly	1.00 EA @	598.73 =	598.73
551. Exterior light fixture	2.00 EA @	210.65 =	421.30
552. Light bulb	2.00 EA @	2.31 =	4.62
553. Exterior faucet / hose bibb	1.00 EA @	100.29 =	100.29
554. Exterior outlet or switch	1.00 EA @	43.72 =	43.72
555. Allowance for Driveway	1.00 EA @	6,917.23 =	6,917.23

### LEFT ELEVATION

Formula Elevation 62' 4" x 10' x 0"

Missing Wall - Goes to neither Floor/Ceiling (2) 6' X 4'

Opens into Exterior

DESCRIPTION	QTY	UNIT PRICE	TOTAL
556. House wrap (air/moisture barrier)	575.33 SF @	0.57 =	327.94
557. Metal lath & stucco	575.33 SF @	10.87 =	6,253.84
558. Soffit & fascia - wood - 2' overhang	62.33 LF @	23.97 =	1,494.05
559. Prime & paint exterior soffit - wood	124.67 SF @	5.95 =	741.79
560. Prime & paint exterior fascia - wood, 6"- 8" wide	62.33 LF @	5.84 =	364.01
561. Gutter / downspout - aluminum - up to 5"	70.33 LF @	14.34 =	1,008.53

### REAR ELEVATION

Formula Elevation 37' 1" x 10' x 0"

Missing Wall - Goes to neither Floor/Ceiling 5' X 4'

Opens into Exterior

Missing Wall - Goes to Floor 3' X 6' 8"

Opens into Exterior

Missing Wall - Goes to neither Floor/Ceiling 4' 3" X 1' 6"

Opens into Exterior

Missing Wall - Goes to neither Floor/Ceiling 2' 8" X 4'

Opens into Exterior

DESCRIPTION	QTY	UNIT PRICE	TOTAL
562. House wrap (air/moisture barrier)	313.79 SF @	0.57 =	178.86
563. Metal lath & stucco	313.79 SF @	10.87 =	3,410.90
564. Soffit & fascia - wood - 2' overhang	37.08 LF @	23.97 =	888.81
565. Prime & paint exterior soffit - wood	74.17 SF @	5.95 =	441.31
566. Prime & paint exterior fascia - wood, 6"- 8" wide	37.08 LF @	5.84 =	216.55
567. Gutter / downspout - aluminum - up to 5"	45.08 LF @	14.34 =	646.45



## Skyline Adjusters, LLC

One World Trade Center, FL 85  
 New York, NY 10007  
 800-590-7293

### CONTINUED - REAR ELEVATION

DESCRIPTION	QTY	UNIT PRICE	TOTAL
568. Storm door assembly	1.00 EA @	598.73 =	598.73
569. Exterior light fixture	2.00 EA @	210.65 =	421.30
570. Light bulb	2.00 EA @	2.31 =	4.62
571. Exterior faucet / hose bibb	1.00 EA @	100.29 =	100.29
572. Exterior outlet or switch	1.00 EA @	43.72 =	43.72

#### RIGHT ELEVATION

Formula Elevation 62' 4" x 10' x 0"

Missing Wall - Goes to neither Floor/Ceiling	6' 4" X 4'	Opens into Exterior
Missing Wall - Goes to neither Floor/Ceiling	(2) 5' 2" X 4'	Opens into Exterior
Missing Wall - Goes to Floor	2' 8" X 6' 8"	Opens into Exterior
Missing Wall - Goes to neither Floor/Ceiling	1' 2" X 4'	Opens into Exterior

DESCRIPTION	QTY	UNIT PRICE	TOTAL
573. House wrap (air/moisture barrier)	534.22 SF @	0.57 =	304.51
574. Metal lath & stucco	534.22 SF @	10.87 =	5,806.97
575. Soffit & fascia - wood - 2' overhang	62.33 LF @	23.97 =	1,494.05
576. Prime & paint exterior soffit - wood	124.67 SF @	5.95 =	741.79
577. Prime & paint exterior fascia - wood, 6"- 8" wide	62.33 LF @	5.84 =	364.01
578. Gutter / downspout - aluminum - up to 5"	70.33 LF @	14.34 =	1,008.53

### Level 2

#### Roof Framing

DESCRIPTION	QTY	UNIT PRICE	TOTAL
<b>ROOF FRAMING</b>			
579. 2" x 10" x 20' #2 & better Fir / Larch (material only)	4.00 EA @	67.07 =	268.28
580. 2" x 10" x 16' #2 & better Fir / Larch (material only)	5.00 EA @	53.23 =	266.15
581. 2" x 10" x 8' #2 & better Fir / Larch (material only)	7.00 EA @	26.82 =	187.74
582. 2" x 8" x 14' #2 & better Fir / Larch (material only)	35.00 EA @	34.90 =	1,221.50
583. 2" x 8" x 12' #2 & better Fir / Larch (material only)	22.00 EA @	29.85 =	656.70
584. 2" x 8" x 10' #2 & better Fir / Larch (material only)	19.00 EA @	24.78 =	470.82





## Skyline Adjusters, LLC

One World Trade Center, FL 85  
 New York, NY 10007  
 800-590-7293

### CONTINUED - Roof Framing

DESCRIPTION	QTY	UNIT PRICE	TOTAL
585. 2" x 8" x 8' #2 & better Fir / Larch (material only)	81.00 EA @	19.83 =	1,606.23
586. 2" x 6" x 20' #2 & better Fir / Larch (material only)	5.00 EA @	56.68 =	283.40
587. 2" x 6" x 18' #2 & better Fir / Larch (material only)	2.00 EA @	51.07 =	102.14
588. 2" x 6" x 8' #2 & better Fir / Larch (material only)	4.00 EA @	15.07 =	60.28
589. Rafters - 2x8 - Labor only - (using rafter length)	1,803.11 LF @	3.98 =	7,176.38
590. Rafters - 2x10 - Labor only - (using rafter length)	67.25 LF @	4.42 =	297.25
591. Rafters - hip - 10" - Labor only (use hip length)	163.46 LF @	41.65 =	6,808.11
592. Rafters - 2x6 - Labor only - (using rafter length)	210.29 LF @	3.34 =	702.37
593. Sheathing - OSB - 1/2"	2,336.86 SF @	2.88 =	6,730.16
594. 2" x 10" x 10' #2 & better Fir / Larch (material only)	4.00 EA @	33.53 =	134.12
595. 2" x 8" x 16' #2 & better Fir / Larch (material only)	23.00 EA @	39.33 =	904.59
596. 2" x 6" x 12' #2 & better Fir / Larch (material only)	2.00 EA @	22.70 =	45.40
597. 2" x 6" x 16' #2 & better Fir / Larch (material only)	2.00 EA @	29.87 =	59.74
598. ST2115 Strap Ties (3/4 x 16 5/16) - Materials & Labor	30.00 EA @	37.61 =	1,128.30

### House Roofing

DESCRIPTION	QTY	UNIT PRICE	TOTAL
<b>DRY IN</b>			
599. Drip edge	210.29 LF @	5.65 =	1,188.14
600. Flashing - pipe jack	4.00 EA @	94.26 =	377.04
601. Roof vent - turbine type	2.00 EA @	268.08 =	536.16
602. Exhaust cap - through roof - up to 4"	3.00 EA @	172.73 =	518.19
603. Valley metal - (W) profile	49.74 LF @	12.97 =	645.13
<b>INSTALL</b>			
604. Roofing felt - 30 lb.	23.37 SQ @	92.79 =	2,168.50
605. Asphalt starter - universal starter course	210.29 LF @	3.89 =	818.03
606. Laminated - High grd - comp. shingle rfg. - w/out felt	27.00 SQ @	623.45 =	16,833.15
607. Hip / Ridge cap - cut from 3 tab - composition shingles	156.97 LF @	9.19 =	1,442.55
608. Solar water heater panel - up to 24 SF	1.00 EA @	1,312.37 =	1,312.37
609. Solar electric panel - 200 to 350 watt	25.00 EA @	737.28 =	18,432.00
610. Solar battery backup and converter	1.00 EA @	879.75 =	879.75



## Skyline Adjusters, LLC

One World Trade Center, FL 85  
 New York, NY 10007  
 800-590-7293

### OTHER STRUCTURES

DESCRIPTION	QTY	UNIT PRICE	TOTAL
611. Carport / Extensions	1.00 EA @	20,000.00 =	20,000.00

### GENERAL

DESCRIPTION	QTY	UNIT PRICE	TOTAL
612. Residential Supervision / Project Management - per hour <i>10 hours a week for 10 months.</i>	400.00 HR @	148.10 =	59,240.00
613. Temporary toilet (per month)	10.00 MO @	274.50 =	2,745.00
614. Temporary hand washing station (per month)	10.00 MO @	431.75 =	4,317.50
615. Temporary power usage (per month)	10.00 MO @	518.08 =	5,180.80
616. R&R Temporary power - hookup	1.00 EA @	603.20 =	603.20
617. Allowance for Tmp Fencing	1.00 EA @	9,500.00 =	9,500.00
618. General Laborer - per hour - General & Progressive Clean-up	100.00 HR @	94.06 =	9,406.00
619. Final cleaning - construction - Residential	1,745.00 SF @	0.50 =	872.50

### Grand Total Areas:

8,365.07 SF Walls	5,175.75 SF Ceiling	13,540.82 SF Walls and Ceiling
5,152.92 SF Floor	572.55 SY Flooring	1,023.01 LF Floor Perimeter
1,988.33 SF Long Wall	1,988.33 SF Short Wall	1,140.34 LF Ceil. Perimeter
5,152.92 Floor Area	5,434.08 Total Area	6,731.72 Interior Wall Area
5,068.81 Exterior Wall Area	596.50 Exterior Perimeter of Walls	
4,673.71 Surface Area	46.74 Number of Squares	420.59 Total Perimeter Length
134.50 Total Ridge Length	179.44 Total Hip Length	



## Skyline Adjusters, LLC

One World Trade Center, FL 85  
New York, NY 10007  
800-590-7293

---

### Summary for Dwelling

Line Item Total	720,097.09
Material Excise Tax	7,962.43
Subtotal	728,059.52
Overhead	68,946.36
Profit	68,946.36
General Excise Tax	33,738.49
<b>Replacement Cost Value</b>	<b>\$899,690.73</b>
<b>Net Claim</b>	<b>\$899,690.73</b>

---



## Skyline Adjusters, LLC

One World Trade Center, FL 85  
New York, NY 10007  
800-590-7293

### Recap by Category

O&P Items	Total	%
APPLIANCES	8,928.34	0.99%
CABINETRY	30,860.92	3.43%
CLEANING	1,508.90	0.17%
CONCRETE & ASPHALT	49,833.55	5.54%
GENERAL DEMOLITION	100.60	0.01%
DOORS	13,260.24	1.47%
DRYWALL	28,021.58	3.11%
ELECTRICAL	24,761.52	2.75%
ELECTRICAL - SPECIAL SYSTEMS	19,311.75	2.15%
HEAVY EQUIPMENT	1,757.60	0.20%
EXCAVATION	32,782.80	3.64%
FLOOR COVERING - CERAMIC TILE	36,230.45	4.03%
PERMITS AND FEES	19,937.20	2.22%
FINISH CARPENTRY / TRIMWORK	7,322.26	0.81%
FINISH HARDWARE	1,489.17	0.17%
FRAMING & ROUGH CARPENTRY	78,618.15	8.74%
HEAT, VENT & AIR CONDITIONING	11,976.94	1.33%
INSULATION	11,559.75	1.28%
LABOR ONLY	69,219.32	7.69%
LIGHT FIXTURES	14,132.60	1.57%
MIRRORS & SHOWER DOORS	3,562.16	0.40%
PLUMBING	51,915.48	5.77%
PAINTING	34,773.20	3.87%
ROOFING	24,526.89	2.73%
SOFFIT, FASCIA, & GUTTER	8,075.68	0.90%
STUCCO & EXTERIOR PLASTER	17,754.41	1.97%
TOILET & BATH ACCESSORIES	103.14	0.01%
TILE	9,019.11	1.00%
TEMPORARY REPAIRS	12,775.96	1.42%
USER DEFINED ITEMS	45,133.89	5.02%
WINDOW TREATMENT	1,410.66	0.16%
WINDOWS - VINYL	10,832.87	1.20%
<b>O&amp;P Items Subtotal</b>	<b>681,497.09</b>	<b>75.75%</b>
<b>Non-O&amp;P Items</b>	<b>Total</b>	<b>%</b>
GENERAL DEMOLITION	38,600.00	4.29%
<b>Non-O&amp;P Items Subtotal</b>	<b>38,600.00</b>	<b>4.29%</b>
<b>O&amp;P Items Subtotal</b>	<b>681,497.09</b>	<b>75.75%</b>

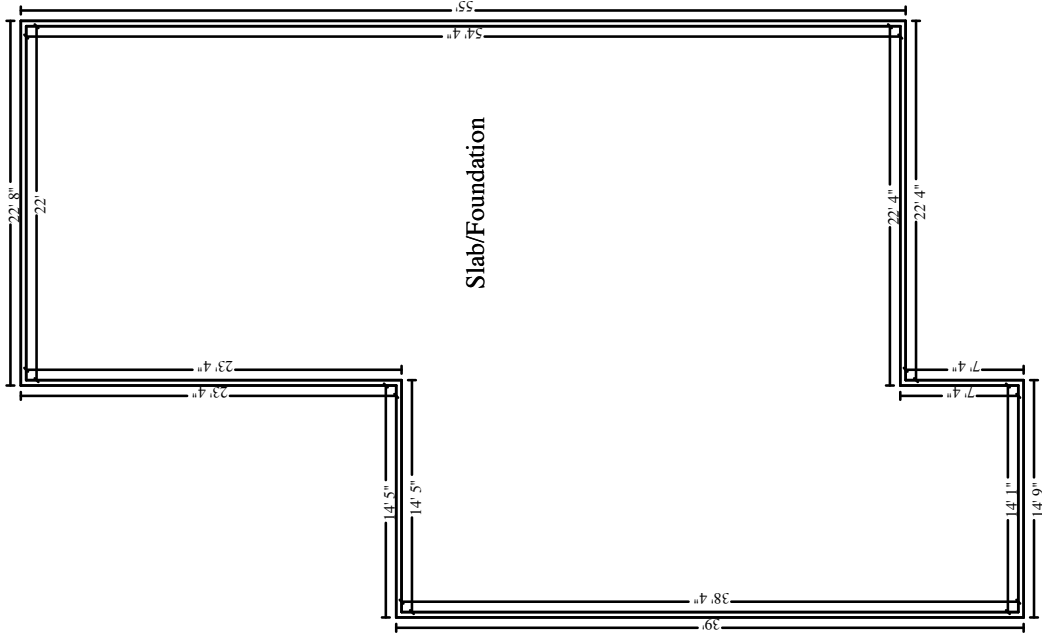


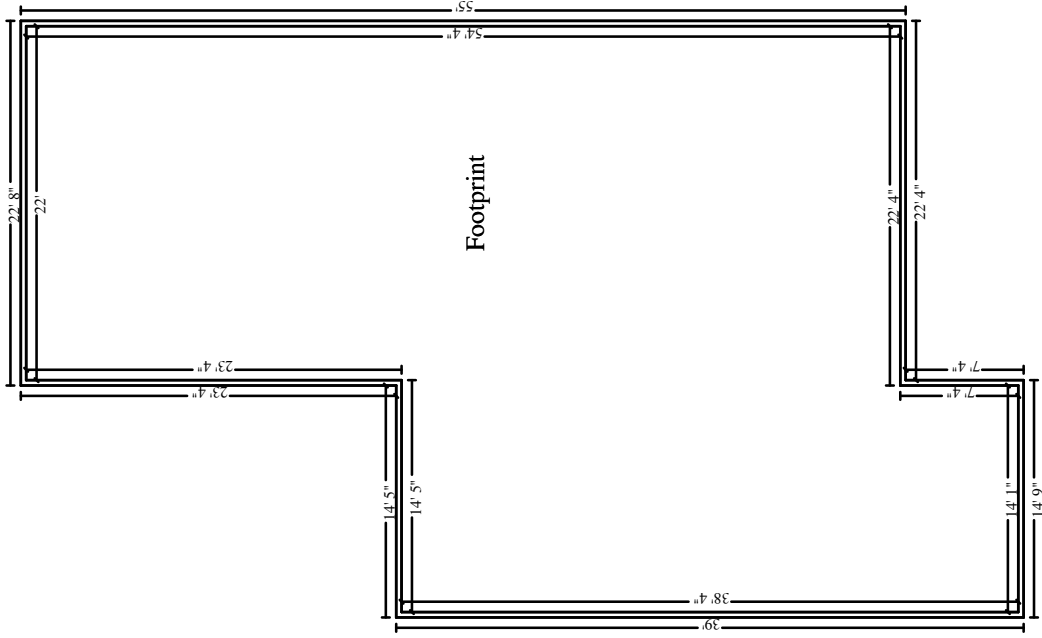
## Skyline Adjusters, LLC

One World Trade Center, FL 85  
New York, NY 10007  
800-590-7293

---

<b>Material Excise Tax</b>	<b>7,962.43</b>	<b>0.89%</b>
<b>Overhead</b>	<b>68,946.36</b>	<b>7.66%</b>
<b>Profit</b>	<b>68,946.36</b>	<b>7.66%</b>
<b>General Excise Tax</b>	<b>33,738.49</b>	<b>3.75%</b>
<hr/>		
<b>Total</b>	<b>899,690.73</b>	<b>100.00%</b>





Footprint



